

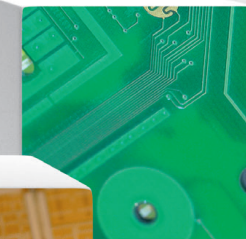
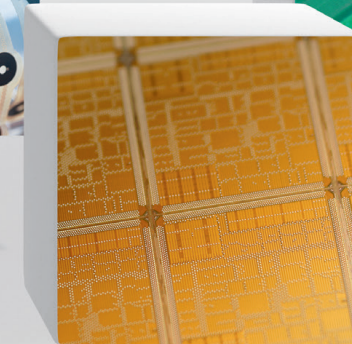
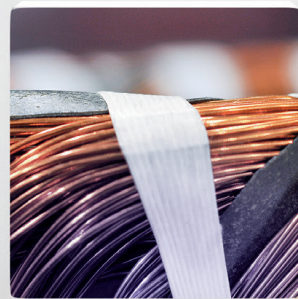
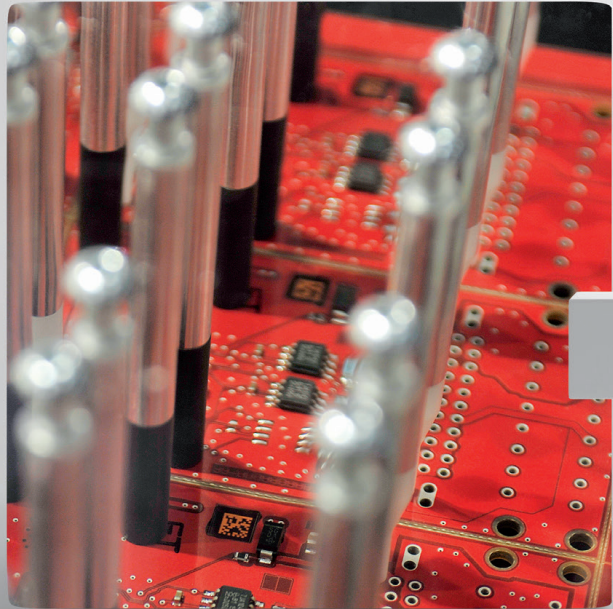


Messe München  
International

Connecting Global Competence

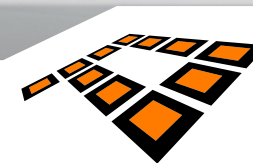
# OFFERS.

PARTICIPATION ALTERNATIVES AND STAND PRICES.



World's leading trade fair for electronics development and production.  
40 years of innovation.

November 10–13, 2015  
Messe München  
[www.productronica.com](http://www.productronica.com)



**productronica** 2015

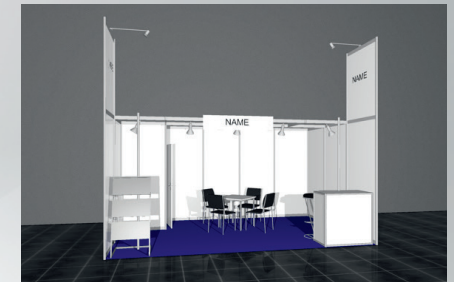
innovation all along the line

# YOUR EXHIBITION STAND. STAND DESIGN AND CONCEPTS.

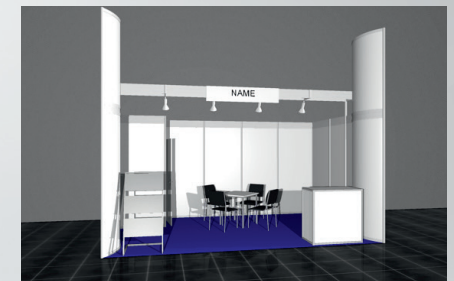
**Stand concepts including stand space:** Put construction of your stand into the hands of professionals and profit from affordable and attractive solutions for your exhibition stand. Besides customized solutions, you can also book a preconfigured row or corner stand: One is the “Connect” with 20 m<sup>2</sup> of space. It replaces the previous Startup Package with only 12 m<sup>2</sup>, but for almost the same price, and gives you much more visibility for your exhibit. The other is the “Column” package, which gives you even more room to present your ideas on 20–36 m<sup>2</sup> of exhibition space.

Includes	Connect (20m <sup>2</sup> )	Column (20–36 m <sup>2</sup> )
Stand setup and dismantling (incl. stand space)	■	■
Stand cleaning	■	
Carpeting (color of choice)	■	■
3 kW electrical connection incl. consumption	■	■
Lighting (1 spotlight per 3 m <sup>2</sup> ), 2 outlets	■	■
1 closet with lockable door and hanger rail	■	■
1 info desk, open, with 1 barstool	■	■
1 table (70 x 70 cm) with 4 chairs	■	■
1 brochure holder	■	■
1 wastebasket	■	
1 built-in display (50 x 50 x 250 cm, partial glass)		■
Signboard with max. 15 letters (Helvetica)	■	■
1 press compartment	■	
2 press releases and 2 photos posted on Internet	■	
AUMA fee	■	
Type of construction	Aluminum construction, plastic-coated white walls, 2.5 meters high, total height 3.5 meters, only available as row stand.	Aluminum construction, plastic-coated white walls, 2.5 meters high, total height 4 meters, only available as row or corner stand with 20–36 m <sup>2</sup> .
<b>Price</b> (all participation fees are subject to mandatory communications fee and VAT)	<b>Row stand: EUR 6,580 (20 m<sup>2</sup>)</b>	<b>Row stand: EUR 349/m<sup>2</sup> Corner stand: EUR 375/m<sup>2</sup></b>

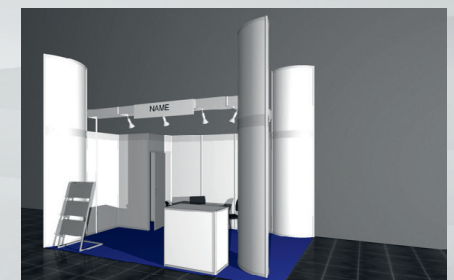
Connect Package  
Row stand



Column Package  
Row stand



Column Package  
Corner stand



Additional information:  
[productronica.com/exhibitor-services](http://productronica.com/exhibitor-services)



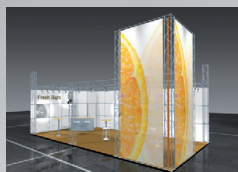
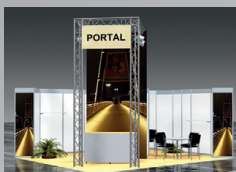
# THE RIGHT STAND FOR EVERY BUDGET.

## SELF-BUILT STANDS

You take care of designing, planning, building and dismantling your stand yourself. You pay only the participation fee per m<sup>2</sup> of exhibition space for your stand. You may select one of the stand types described in the right column. Act by November 30, 2014 and secure yourself our attractive Early Bird discount.

## STAND-BUILDING SOLUTION

You have an idea of how your exhibit should look, but you want to have it completely implemented by stand-building experts? Our experienced service partner for stand-building solutions, MEPLAN, will design your exhibition stand in keeping with your specifications and your budget and, of course, also take care of setup and dismantling. It does not matter if you want a simple exhibit or a more elaborate exhibition stand. MEPLAN has the widest variety of solutions available—simply request your personal offer.



## SYSTEM

Just one click to an affordable fixed price

## INDIVIDUAL SYSTEM

The perfect combination of system and design

## DESIGN

Budget-oriented stand design in your corporate identity

Book by November 30, 2014.  
Secure your Early Bird discount.

### ROW STAND

**1** One side \*EUR 226/m<sup>2</sup>  
open \*\*EUR 233/m<sup>2</sup>

### CORNER STAND

**2** Two sides \*EUR 249/m<sup>2</sup>  
open \*\*EUR 258/m<sup>2</sup>

### END STAND

**3** Three sides \*EUR 259/m<sup>2</sup>  
open \*\*EUR 268/m<sup>2</sup>

### ISLAND STAND

**4** Four sides \*EUR 266/m<sup>2</sup>  
open \*\*EUR 276/m<sup>2</sup>

\* If booked by November 30, 2014

\*\* If booked on or after December 1, 2014. Please refer to Special Terms of Participation B, Item B3. Prices for combination packages remain unchanged.

## WE LOOK FORWARD TO YOUR INQUIRY

MEPLAN GmbH –  
A Messe München GmbH company  
Tel. +49 89 949-24980  
Fax +49 89 949-24989  
E-mail: [info@meplan.de](mailto:info@meplan.de)  
[www.meplan.de](http://www.meplan.de)

Published by Messe München GmbH, Munich; Printed in Germany; Preisblatt E / 08-2014, Subject to change without notice. Supplies limited. Available only while supplies last. All prices subject to VAT. 08/14

Messe München GmbH,  
Messegelände  
81823 München, Germany  
Tel. +49 89 949-20320 / 20330  
Fax +49 89 949-20339  
E-mail: [info@productronica.com](mailto:info@productronica.com)



**productronica**  
innovation all along the line